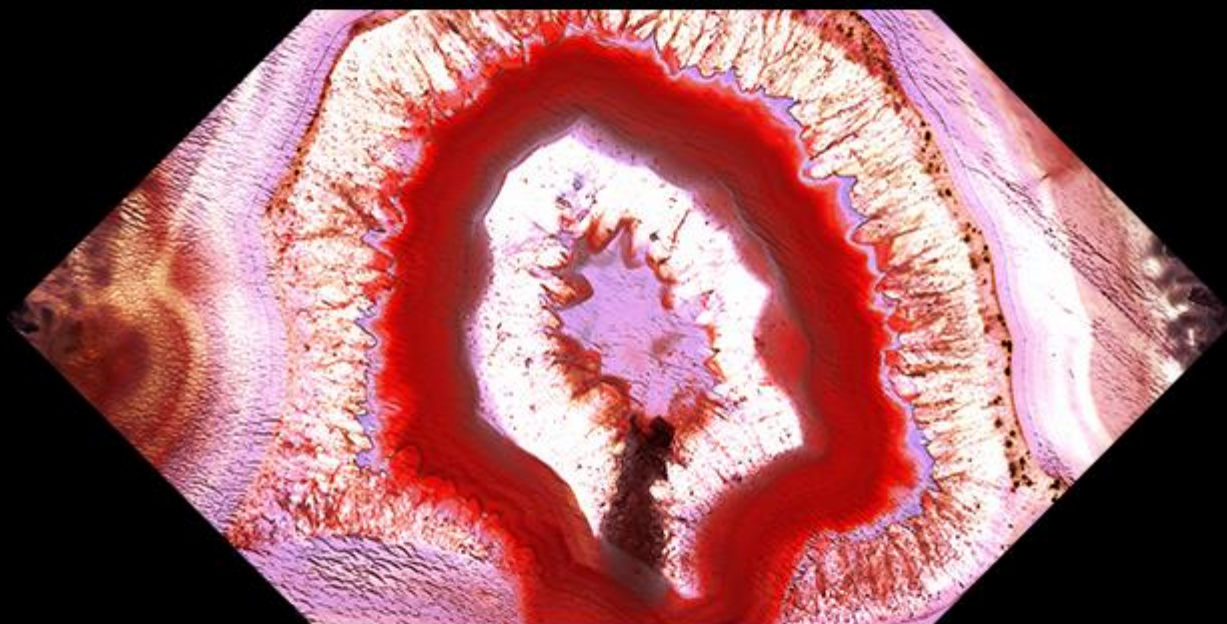


HSBC Securitised Credit Strategies

Strategy Overview – January 2024



For Professional Clients only and should not be distributed to or relied upon by Retail Clients.

This is a marketing communication. Please refer to the prospectus of the funds and to the KIIDs before making any final investment decisions.

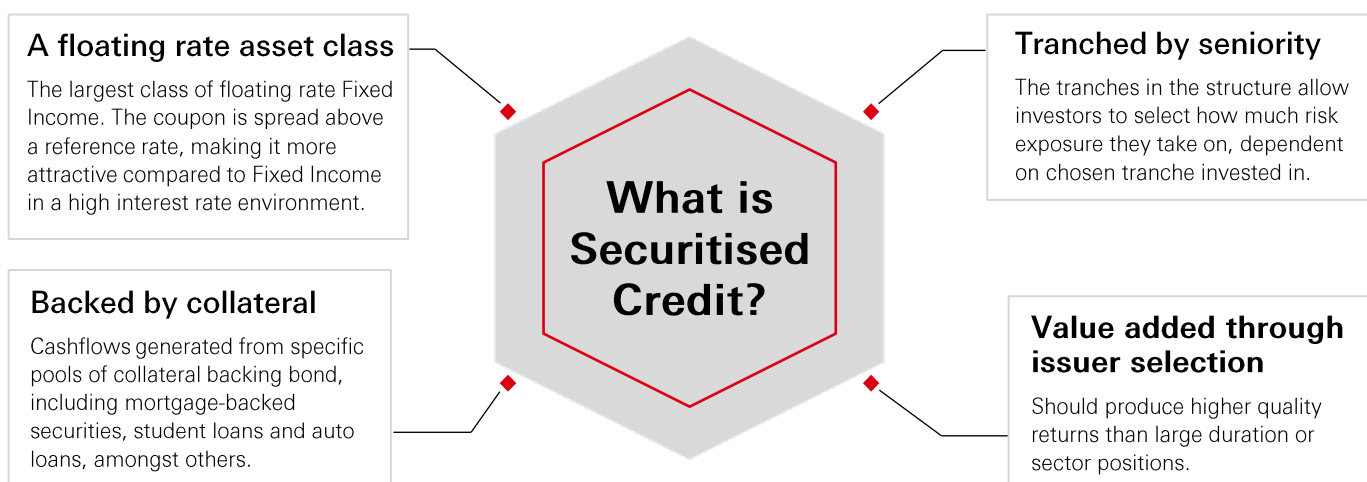
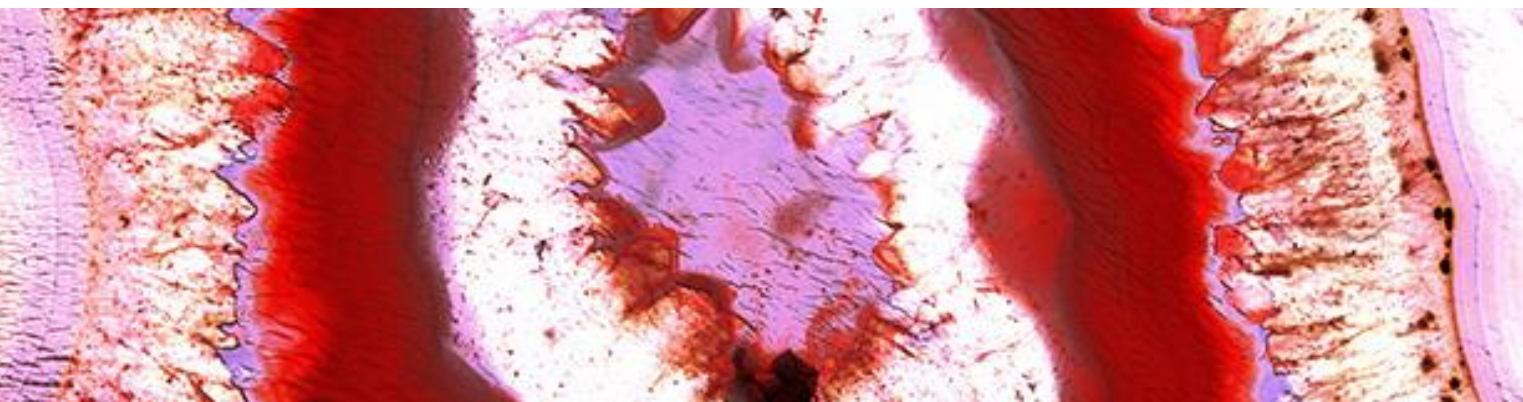


HSBC Asset Management

Opening up a world of opportunity

HSBC Securitised Credit Strategies

Strategy Overview



How does Securitised Credit compare to traditional Fixed Income?

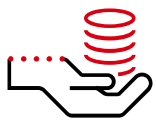
Securitised Credit	Traditional Corporate Bonds
Floating rate coupons offer a margin above a reference rate such as the LIBOR.	Fixed rate coupons locked in over full length of bond's maturity period.
Tranches of seniority allow note holders to receive payments and suffer losses dependent on chosen risk level.	No tranches means that all bond holders receive payments and suffer losses equally.
Amortising maturity dates mean that principal is repaid over lifetime of maturity.	Fixed maturity dates mean that principal is received upon maturity date.
Credit rating depends on level of credit enhancement , used to protect against losses.	Credit rating depends on issuers ability to repay the bond.
Cash flow generated from underlying collateral such as mortgage repayments.	Cash flow generated from issuer's underlying business activity.

The value of investments and any income from them can go down as well as up and investors may not get back the amount originally invested.

HSBC Securitised Credit Strategies

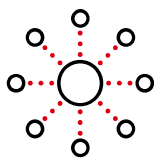
Strategy Overview

Why consider investing in Securitised Credit?



Yield pick up

Offers a pickup in yield to similarly rated corporate bonds, mainly due to its complexity premium. Can enhance portfolio yield without increasing credit risk or duration.



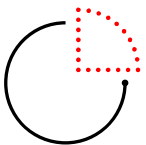
Diversification

Low correlation to traditional Fixed Income can add value through diversification when replacing or adding to a traditional Fixed Income portfolio. There is opportunity to reduce portfolio duration, potentially enhancing returns, whilst maintaining a desired level of credit quality.



Potential for spread compression

Securitized Credit is a credit product. With credit spreads in the asset class remaining wide, there is a potential for spread tightening and capital appreciation as the global economy begins to slow.



Diversified access

Enables investors to gain exposure to diversified, illiquid asset classes that are difficult for investors to access directly, such as residential mortgages, which are originated by banks.



Risk and reward preference

Senior tranches expose investors to lower risk, thus lower returns, as they receive interest and principal payments from the collateral first.

Investors in the subordinate tranches are exposed to more risk, but are rewarded greater returns, as the tranches effectively provide 'leveraged' exposure to the collateral.



Highly experienced team

Our team at HSBC holds an average of 18 years of experience. Each sector within Securitised Credit (e.g., CMBS, RMBS, CLOs) has a dedicated Portfolio Manager and Analyst, allowing a global value approach to be taken in unlocking the potential within Securitised Credit.

HSBC Securitised Credit Strategies

Strategy overview

HSBC Securitised Credit Strategies

	Investment Grade	Flexible	High Yield																																						
Investment Universe	AAA to A rated Global Securitised Credit	Invest across the full spectrum of rating, region and sectors	Predominantly non-investment Grade Global Securitised Credit																																						
Fund AUM (USD)	1,960m	79m	76m																																						
Strategy AUM (USD)	1,960m	526m	76m																																						
Average credit quality	AA	BBB	BB+																																						
Duration	0.5 year	0.4 year	0.4 year																																						
Spread duration	2.3 years	2.8 years	3.2 years																																						
Yield to maturity	6.4%	8.9%	10.2%																																						
Investment Format	Pooled Fund / Segregated Mandates	Pooled Fund / Segregated Mandates	Pooled Fund / Segregated Mandates																																						
Fund Liquidity	Daily	Weekly (3 business days notice for redemptions)	Weekly (5 business days notice for redemptions)																																						
Fund Ongoing Charges	0.60% (X share class) Management: 0.45%, Expenses: 0.15%	0.75% (X share class) Management: 0.60%, Expenses: 0.15%	0.85% (X share class) Management: 0.70%, Expenses: 0.15%																																						
Rating Distribution (%)	<table border="1"> <tr><td>AAA</td><td>45</td></tr> <tr><td>AA</td><td>35</td></tr> <tr><td>A</td><td>18</td></tr> <tr><td>Cash</td><td>2</td></tr> </table>	AAA	45	AA	35	A	18	Cash	2	<table border="1"> <tr><td>AAA</td><td>1</td></tr> <tr><td>AA</td><td>9</td></tr> <tr><td>A</td><td>20</td></tr> <tr><td>BBB</td><td>43</td></tr> <tr><td>BB</td><td>16</td></tr> <tr><td>B</td><td>6</td></tr> <tr><td>Cash</td><td>5</td></tr> </table>	AAA	1	AA	9	A	20	BBB	43	BB	16	B	6	Cash	5	<table border="1"> <tr><td>AAA</td><td>1</td></tr> <tr><td>AA</td><td>4</td></tr> <tr><td>A</td><td>3</td></tr> <tr><td>BBB</td><td>38</td></tr> <tr><td>BB</td><td>41</td></tr> <tr><td>B</td><td>9</td></tr> <tr><td>Cash</td><td>5</td></tr> </table>	AAA	1	AA	4	A	3	BBB	38	BB	41	B	9	Cash	5		
AAA	45																																								
AA	35																																								
A	18																																								
Cash	2																																								
AAA	1																																								
AA	9																																								
A	20																																								
BBB	43																																								
BB	16																																								
B	6																																								
Cash	5																																								
AAA	1																																								
AA	4																																								
A	3																																								
BBB	38																																								
BB	41																																								
B	9																																								
Cash	5																																								
Geographic Distribution (%)	<table border="1"> <tr><td>USA</td><td>54</td></tr> <tr><td>UK</td><td>14</td></tr> <tr><td>EU ex. UK</td><td>26</td></tr> <tr><td>Australia</td><td>6</td></tr> </table>	USA	54	UK	14	EU ex. UK	26	Australia	6	<table border="1"> <tr><td>USA</td><td>70</td></tr> <tr><td>UK</td><td>15</td></tr> <tr><td>EU ex. UK</td><td>13</td></tr> <tr><td>Australia</td><td>1</td></tr> </table>	USA	70	UK	15	EU ex. UK	13	Australia	1	<table border="1"> <tr><td>USA</td><td>74</td></tr> <tr><td>UK</td><td>11</td></tr> <tr><td>EU ex. UK</td><td>14</td></tr> <tr><td>Australia</td><td>1</td></tr> </table>	USA	74	UK	11	EU ex. UK	14	Australia	1														
USA	54																																								
UK	14																																								
EU ex. UK	26																																								
Australia	6																																								
USA	70																																								
UK	15																																								
EU ex. UK	13																																								
Australia	1																																								
USA	74																																								
UK	11																																								
EU ex. UK	14																																								
Australia	1																																								
Sector Distribution (%)	<table border="1"> <tr><td>CLO</td><td>43</td></tr> <tr><td>CMBS</td><td>27</td></tr> <tr><td>RMBS</td><td>22</td></tr> <tr><td>Student Loan ABS</td><td>2</td></tr> <tr><td>Whole Business ABS</td><td>3</td></tr> <tr><td>Autos</td><td>0</td></tr> <tr><td>Other</td><td>1</td></tr> <tr><td>Cash</td><td>2</td></tr> </table>	CLO	43	CMBS	27	RMBS	22	Student Loan ABS	2	Whole Business ABS	3	Autos	0	Other	1	Cash	2	<table border="1"> <tr><td>CLO</td><td>40</td></tr> <tr><td>CMBS</td><td>34</td></tr> <tr><td>RMBS</td><td>19</td></tr> <tr><td>Whole Business ABS</td><td>3</td></tr> <tr><td>Cash</td><td>5</td></tr> </table>	CLO	40	CMBS	34	RMBS	19	Whole Business ABS	3	Cash	5	<table border="1"> <tr><td>CLO</td><td>40</td></tr> <tr><td>CMBS</td><td>34</td></tr> <tr><td>RMBS</td><td>16</td></tr> <tr><td>Whole Business ABS</td><td>4</td></tr> <tr><td>Consumer Loans</td><td>1</td></tr> <tr><td>Cash</td><td>5</td></tr> </table>	CLO	40	CMBS	34	RMBS	16	Whole Business ABS	4	Consumer Loans	1	Cash	5
CLO	43																																								
CMBS	27																																								
RMBS	22																																								
Student Loan ABS	2																																								
Whole Business ABS	3																																								
Autos	0																																								
Other	1																																								
Cash	2																																								
CLO	40																																								
CMBS	34																																								
RMBS	19																																								
Whole Business ABS	3																																								
Cash	5																																								
CLO	40																																								
CMBS	34																																								
RMBS	16																																								
Whole Business ABS	4																																								
Consumer Loans	1																																								
Cash	5																																								

Past performance does not predict future returns. The level of yield is not guaranteed and may rise or fall in the future.

Source: HSBC Asset Management as of 31 December 2023. SFDR Article 8 Funds. Ratings are an average of S&P, Moody's, Fitch, DBRS and Kroll. Cash includes actual cash, liquidity fund investments and contributions to NAV from FX forwards. Totals may not add up to 100% due to rounding.

HSBC Securitised Credit Strategies

Key risks

The value of investments and any income from them can go down as well as up and investors may not get back the amount originally invested.

- ◆ **Interest Rate Risk:** As interest rates rise debt securities will fall in value. The value of debt is inversely proportional to interest rate movements.
- ◆ **Counterparty Risk:** The possibility that the counterparty to a transaction may be unwilling or unable to meet its obligations.
- ◆ **Credit Risk:** Issuers of debt securities may fail to meet their regular interest and/or capital repayment obligation. All credit instruments therefore have the potential for default. Higher yielding securities are more likely to default.
- ◆ **Default Risk:** The issuers of certain bonds could become unwilling or unable to make payments on their bonds.
- ◆ **Emerging Markets Risk:** Emerging markets are less established, and often more volatile, than developed markets and involve higher risks, particularly market, liquidity and currency risks.
- ◆ **Exchange Rate Risk:** Investing in assets denominated in a currency other than that of the investor's own currency perspective exposes the value of the investment to exchange rate fluctuations.
- ◆ **Investment Leverage Risk:** Investment Leverage occurs when the economic exposure is greater than the amount invested, such as when derivatives are used. A Fund that employs leverage may experience greater gains and/or losses due to the amplification effect from a movement in the price of the reference source.
- ◆ **Asset Backed Securities (ABS) Risk:** ABS are typically constructed from pools of assets (e.g. mortgages) that individually have an option for early settlement or extension, and have potential for default. Cash flow terms of the ABS may change and significantly impact both the value and liquidity of the contract.
- ◆ **Derivatives Risk:** The value of derivative contracts is dependent upon the performance of an underlying asset. A small movement in the value of the underlying can cause a large movement in the value of the derivative. Unlike exchange traded derivatives, over-the-counter (OTC) derivatives have credit risk associated with the counterparty or institution facilitating the trade.
- ◆ **High Yield Risk:** Higher yielding debt securities characteristically bear greater credit risk than investment grade and/or government securities.
- ◆ **Liquidity Risk:** Liquidity is a measure of how easily an investment can be converted to cash without a loss of capital and/or income in the process. The value of assets may be significantly impacted by liquidity risk during adverse markets conditions.
- ◆ **Operational Risk:** The main risks are related to systems and process failures. Investment processes are overseen by independent risk functions which are subject to independent audit and supervised by regulators.

Further information on the potential risks can be found in the Key Investor Information Document (KIID) and/ or the Prospectus or Offering Memorandum.

HSBC Securitised Credit Strategies

For Professional Clients only and should not be distributed to or relied upon by Retail Clients.

The material contained herein is for marketing purposes and is for your information only. This document is not contractually binding nor are we required to provide this to you by any legislative provision. It does not constitute legal, tax or investment advice or a recommendation to any reader of this material to buy or sell investments. You must not, therefore, rely on the content of this document when making any investment decisions.

This document is not intended for distribution to or use by any person or entity in any jurisdiction or country where such distribution or use would be contrary to law or regulation. This document is not and should not be construed as an offer to sell or the solicitation of an offer to purchase or subscribe to any investment.

The document is based on information obtained from sources believed to be reliable but which have not been independently verified. HSBC Global Asset Management (UK) Limited and HSBC Group accept no responsibility as to its accuracy or completeness. Care has been taken to ensure the accuracy of this presentation but HSBC Global Asset Management (UK) Limited accepts no responsibility for any errors or omissions contained therein.

This document and any issues or disputes arising out of or in connection with it (whether such disputes are contractual or non-contractual in nature, such as claims in tort, for breach of statute or regulation or otherwise) shall be governed by and construed in accordance with English law.

Any views expressed were held at the time of preparation and are subject to change without notice. While any forecast, projection or target where provided is indicative only and not guaranteed in any way. HSBC Global Asset Management (UK) Limited accepts no liability for any failure to meet such forecast, projection or target.

HGIF Global Investment Grade Securitised Credit Bond, HGIF Global High Yield Securitised Credit Bond and HGIF Global Securitised Credit Bond are sub-funds of the HSBC Global Investment Funds, a Luxembourg domiciled Société d'investissement à Capital Variable (SICAV). UK based investors in HSBC Global Investment Funds are advised that they may not be afforded some of the protections conveyed by the provisions of the Financial Services and Markets Act 2000. HSBC Global Investment Funds is recognised in the United Kingdom by the Financial Conduct Authority under section 264 of the Act. The shares in HSBC Global Investment Funds have not been and will not be offered for sale or sold in the United States of America, its territories or possessions and all areas subject to its jurisdiction, or to United States Persons. All applications are made on the basis of the current HSBC Global Investment Funds Prospectus, Key Investor Information Document (KIID), Supplementary Information Document (SID) and most recent annual and semi-annual reports, which can be obtained upon request free of charge from HSBC Global Asset Management (UK) Limited, 8 Canada Square, Canary Wharf, London, E14 5HQ. UK, or the local distributors. **Investors and potential investors should read and note the risk warnings in the prospectus and relevant KIID and additionally, in the case of retail clients, the information contained in the supporting SID.**

The decision to invest in the funds should take account of all the characteristics or objectives as described in the prospectus or equivalent document. Detailed information for article 8 and 9 sustainable investment products, as categorised under the Sustainable Finance Disclosure Regulation (SFDR), including; description of the environmental or social characteristics or the sustainable investment objective; methodologies used to assess, measure and monitor the environmental or social characteristics and the impact of the selected sustainable investments and; objectives and benchmark information, can be found at:

<https://www.assetmanagement.hsbc.co.uk/en/intermediary/investment-expertise/sustainable-investments/sustainable-investment-product-offering>

The value of the underlying assets is strongly affected by interest rate fluctuations and by changes in the credit ratings of the underlying issuer of the assets. The sub-fund can invest in sub investment grade bonds, which may produce a higher level of income than investment grade bonds, but carry increased risk of default on repayment. The performance of bonds, gilts and other fixed interest securities tends to be less volatile than those of shares of companies (equities). However, there is a risk that both the relative yield and the capital value of these may be reduced if interest rates go up. Income offered by bonds often reflects, in part, the risk rating of the issuer. The underlying funds can invest in sub investment grade bonds, which may produce a higher level of income than investment grade bonds, but carry increased risk of default on repayment. This may affect the level of income the investor receives and/or the capital value of their investment. The level of yields is not guaranteed and may rise or fall in the future.

HGIF Global Investment Grade Securitised Credit Bond, HGIF Global High Yield Securitised Credit Bond and HGIF Global Securitised Credit Bond are actively managed.

The funds may use derivatives for the purposes of efficient portfolio management i.e. to meet the investment objective of the Fund and it is not intended that their use will raise the overall risk profile of the Fund. Please note derivative instruments may involve a high degree of financial risk. These risks include the risk that a small movement in the price of an underlying security or benchmark may result in disproportionately large movement; unfavourable or favourable in the price of the derivative instrument; the risk of default by counterparty; and the risk that transactions may not be liquid.

The value of investments and any income from them can go down as well as up and investors may not get back the amount originally invested. Where overseas investments are held the rate of currency exchange may also cause the value of such investments to fluctuate. Investments in emerging markets are by their nature higher risk and potentially more volatile than those inherent in some established markets. Stock market investments should be viewed as a medium to long term investment and should be held for at least five years. Any performance information shown refers to the past and should not be seen as an indication of future returns.

To help improve our service and in the interests of security we may record and/or monitor your communication with us. HSBC Global Asset Management (UK) Limited provides information to Institutions, Professional Advisers and their clients on the investment products and services of the HSBC Group.

Approved for issue in the UK by HSBC Global Asset Management (UK) Limited, who are authorised and regulated by the Financial Conduct Authority.

HSBC Asset Management is the brand name for the asset management business of HSBC Group, which includes the investment activities provided through our local regulated entity, HSBC Global Asset Management (UK) Limited.

www.assetmanagement.hsbc.com/uk

Copyright © HSBC Global Asset Management (UK) Limited 2024. All rights reserved.

20240059 EXP 31.12.2024

